



**BIYINZIKA**  
POULTRY INTERNATIONAL LTD  
Healthy chicks, Nutritious feeds.

# BROILER

## MANAGEMENT TIPS

### GET THE BASICS RIGHT!

Help your birds make your business profitable.

- Take good care of your chicks from day one. Only a healthy chick will produce a good chicken
- Chickens need a good environment to stay healthy and grow strong - a dry, well ventilated house, clean water, good sanitation and strict bio-security control
- Give your chickens the best possible protection against diseases through correct use of drugs and vaccines
- Ensure fast steady growth by giving the right feed at the right time
- A healthy well fed chicken = a good return on your investment

### CHICKS

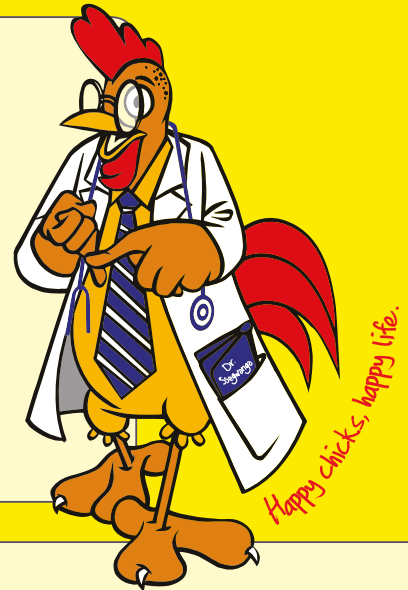
The first step to a profitable business is to have strong healthy chicks.

#### Preparation for chick arrival

- Clean and properly disinfect the house, equipment and surroundings
- Position curtains/surroundings so as to maintain the correct temperature, good ventilation but at the same time avoid draughts
- Aim for 40 chicks/sq metre for brooding
- Spread litter material evenly - may be softwood shavings, coffee or rice husks minimum 6cm deep
- Evenly space water founts and feeders in the brooding area
- When it is cold pre-heat the brooding area to reach the correct temperature before receiving chicks

#### When you transport chicks from shop to farm make sure of the following

- Chicks have enough air to breathe, they are not exposed to too much cold or heat and they do not get wet



### ENVIRONMENT

#### Air

- Good ventilation and fresh air at the correct temperature for the age of the bird is essential
- Avoid draughts by ensuring good management of the curtains

#### Litter

- May be softwood shavings, coffee or rice husks
- Spread evenly up to 6cm deep

- Litter should not become caked or too dusty
- Use litter for only one cycle

#### Space

- Gradually increase from brooding (40 birds/sq meter) to 8 - 12 birds/sq meter at 3 weeks

#### Light

- For best growth, 24 hours during the 1st day and 23 hours/day thereafter

#### Sanitation

- Clean houses thoroughly using detergents as well as disinfectants
- Clean and disinfect all equipment

#### Bio-Security

- Restrict access to the farm as much as possible
- Avoid vehicles driving near the houses
- Avoid keeping other types of birds on the farm

### BROODING

The first few days are the most important in a bird's life so extra care and attention is required.

Observe the chicks carefully and often - they will let you know how they feel by their behaviour and if any changes need to be made.

Look at the way the birds behave. They should be evenly scattered throughout the brooding area. If they are huddled around the heater the room is too cold, if they are keeping far from the heater the heat is too much.

#### TEMPERATURE CHART

Day 1: 30°C	Day 6: 27°C	Day 12: 25°C	Day 18: 23°C	Day 24: 21°C
Day 3: 28°C	Day 9: 26°C	Day 15: 24°C	Day 21: 22°C	Day 27: 20°C

#### FEEDING GUIDELINES

Feed Type	Period (Days)	Feed (Kgs/bird)
Starter crumble	1 - 14 days	0.8
Grower pellets	15 - 28 days	1.2
Finisher pellets	29 - 35 days	1
<b>Total</b>		<b>3</b>

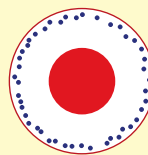
#### Feed & Water

- Clean water must be available to the birds at all times
- Keep drinkers and feeders at the height of the bird's back
- Feed ad lib (keep enough feed in feeders at all times)

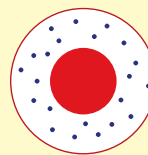


### BIRDS DISTRIBUTION UNDER BROODERS

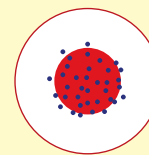
Temperature too high



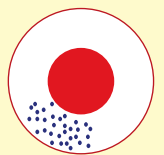
Temperature correct



Temperature too low



Draught



Listen to the sound they are making.

Low chirping = happy, loud noise = too hot and uncomfortable, no noise = cold or weak.

Smell the air at floor level. You should be able to breathe comfortably.

#### VACCINATION PROGRAM

Period	Vaccine type	Method of application
7 days	Newcastle/Infectious Bronchitis (IB)	Eye drop/Drinking water
14 days	Gumboro	Eye drop/Drinking water
21 days	Gumboro	Eye drop/Drinking water
28 days	Newcastle/Infectious Bronchitis (IB)	Eye drop/Drinking water

**BIYINZIKA POULTRY INTERNATIONAL LIMITED**

@biyinzikaug | Biyinzika Poultry International Limited | Biyinzika Poultry International Limited  
Tel: 0791 112 227 | Email: info@biyinzika.co.ug | Website: www.biyinzika.co.ug